

INVIKTA DIODE LASER

The 808nm Diode Laser for laser hair removal has become the gold standard for treating all skin types.

- Efficacy + diode laser used over 20 years
- Safety + #1 selling wavelength for all skin types
- Speed + up to 10 pulses per second
- Power + 2500 watts continuous or pulsed mode
- Cost + No Consumables



Overview

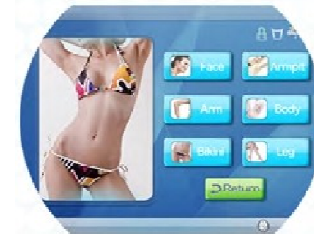


Power Switch

Emergency Switch



Connection Plug



360°rotation screen



Handle



German 808nm Diode

Theory

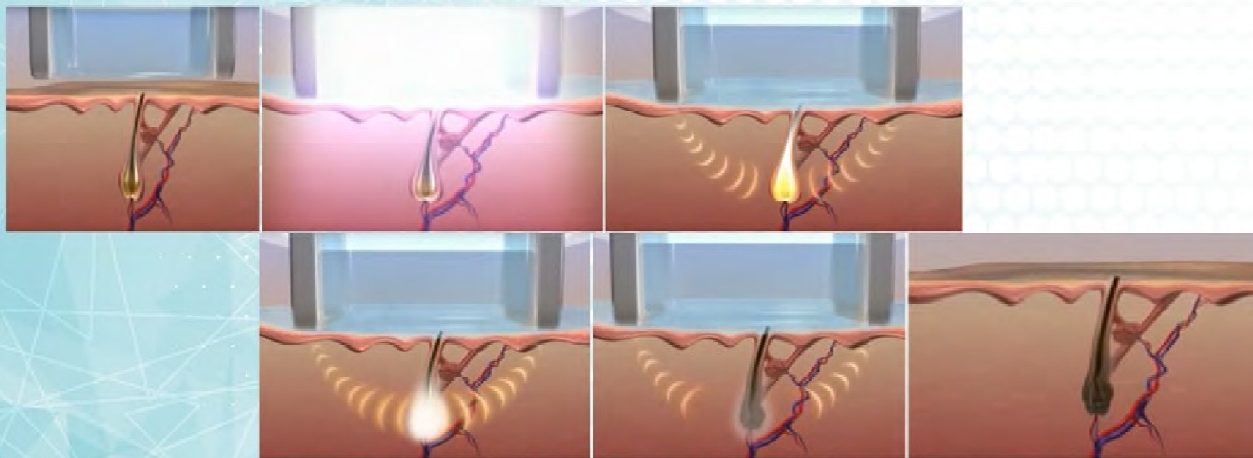
- How diode laser works:

During the laser hair removal treatment, light passes through the skin and is absorbed by the melanin in the hair shaft.

This absorption raises the temperature of the hair follicle and thermally destroys the cells responsible for regrowth.

- Indication:

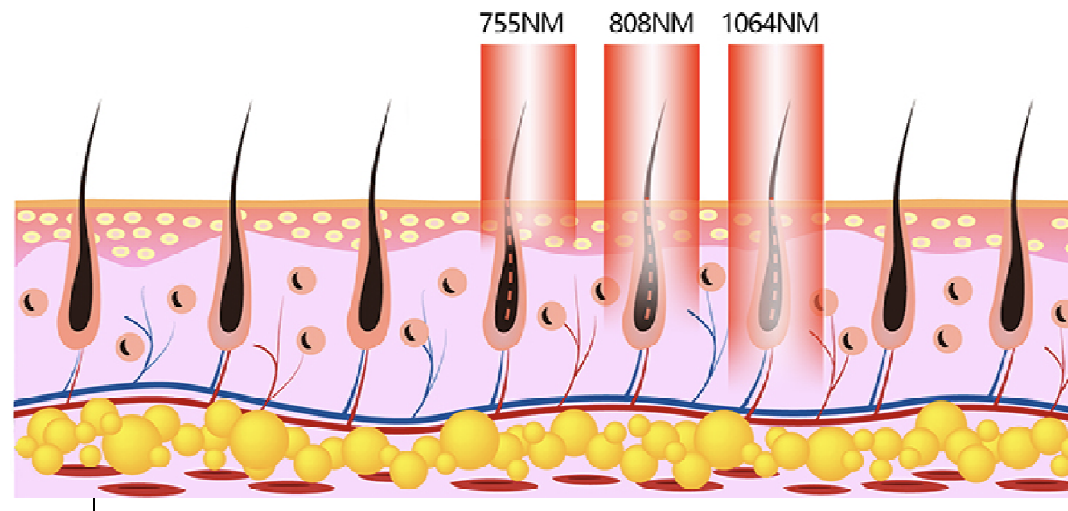
Laser hair reduction



Features

- 600W handle
- Maximum clinical efficacy and comfort to achieve cooling, which makes for a almost painless hair removal treatment .
- German made diode laser module.
- Clinically outstanding treatment results achieved after full treatment course consisting of three to ten sessions.

Cellular Targets In Red and Near Infrared (NIR) Wavelengths



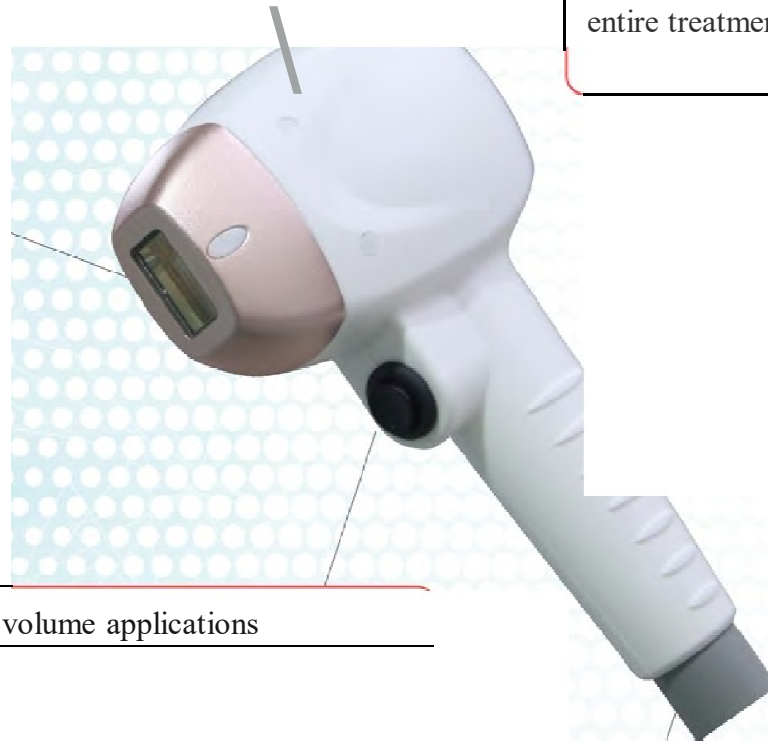
Applicatio

n Diode Information:

The 808 nm diode is equipped with an internal cooling system. It provides a constant, comfortable cooling throughout the entire treatment. This makes for better clinical outcomes, and longer lifespan of the handpiece itself.

Sleek handpiece design allows for clinician to easily operate handpiece throughout entire treatment.

- 1. Diode laser
- 2. One million shots
- 3. Spot size: 12x16mm



High volume applications

Application

A breakthrough hair removal platform that combines ultimate functionality with unparalleled comfort. Thanks to the large spot size and advanced cooling system treatments are now much faster and nearly painless.

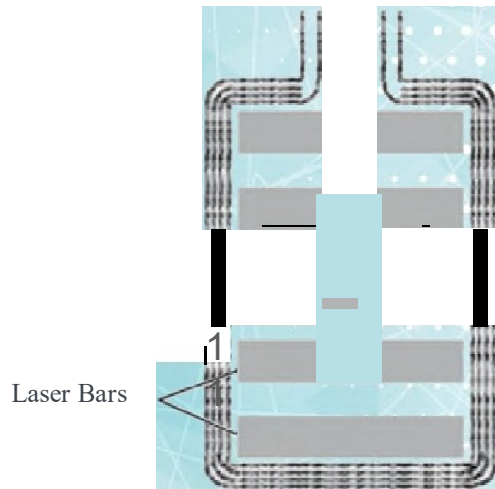


Application



Cooling System

- High capacity liquid cooler, 2 times more effective than other systems.
- Cooling system keeps water temperature at 26-28 °C



Water circulation around the laser bar ensure the maximum energy transfer from the laser to the targeted tissue being treated.



Before & After



Before

After



Before

After



Before

After



Before

After

Specifications

Aesthetika INVIKTA Specifications

Light Source	Diode (Pulsed & Continuous Wave)
Modes	SHR Mode, HR Mode
Wavelength(s)	808 nm
Power	1200 watts
Fluence	Up to 120 J/cm ²
Spot Size	12 x 16 mm
Pulse Duration	8 - 685 ms
Repetition Rate	Up to 10 Hz
Cooling Mode	Sapphire Contact Cooling 0 - 30C
Electrical	110 V 60 Hz 220 V 50 Hz
Dimensions	19.7 x 17.5 x 43.5 Inches
Weight	125.5 lbs
Display	15" Color LCD Screen

Patient Consult

Before any treatment, ALWAYS sit down with the client to explain the entire process.
They should know exactly what is expected of them.
They should know what to expect as far as outcomes.

Fitzpatrick Skin Types

Skin Type is race dependent and DOES NOT CHANGE.
Suntan alters the degree of pigmentation NOT the skin type.
Density and coarseness of hair must be considered during treatments

Fitzpatrick Skin Types

Skin Type	Typical Skin Type Definition	Skin Reaction on over exposure to UV light
1	Red,blonde, white, gray hair Blue-green Eyes Very light Skin	Always Burns Never Tans
2	Light to Medium Hair Light to Medium Eyes Light to Medium Skin	Usually Burns Seldom Tans
3	Medium Hair Medium to Dark Eyes Medium to Olive Skin	Moderate Burns Usually Tans
4	Dark Hair Dark Eyes Dark Olive to Brown Skin	Burns Mildly Moderate Browning Asian, Hispanic, Indian
5	Dark Hair Dark Eyes Dark Skin	Seldom Burns Deep Browning Indian, Mexican, Pakistani
6	Dark Hair Dark Eyes Very Dark Skin	Does Not Burn No Change in Color African American

Patient Consult

How does the Laser work?

Patient Consult

Laser Hair Removal –

Targets the pigment in the hair follicle. Heat is absorbed and destroys the cells lining the hair follicle specifically around the bulb, bulge, and vascular supply.

Permanent Hair Reduction

**“long-term stable
reduction in the number of
hairs re-growing after a
treatment regime”**

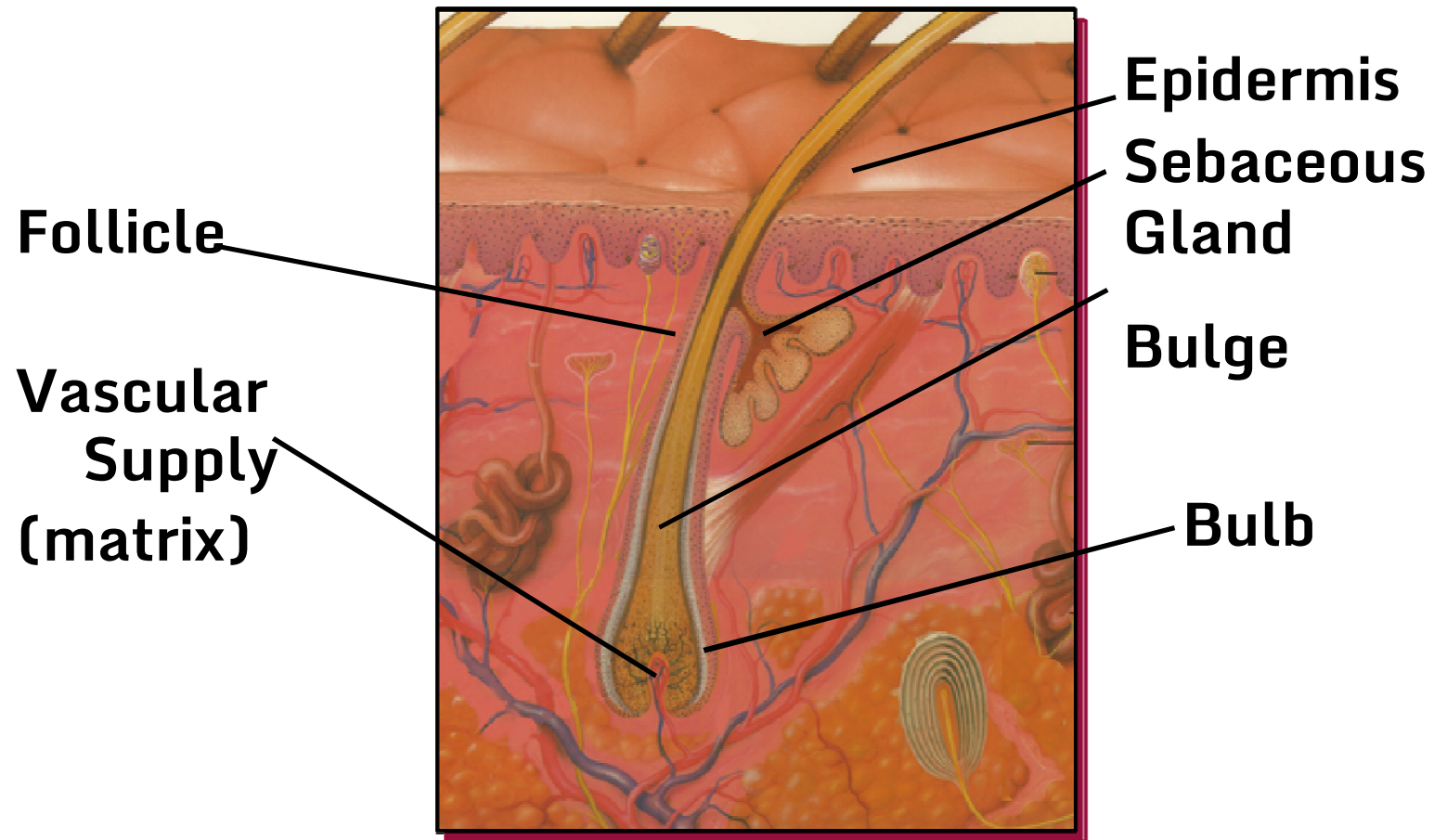
**The FDA states that this is what we are
doing.**

IMPORTANT!

Write This Down

The Invikta will NOT treat white, red, blonde, or gray hairs! Inform upfront.
Some reds hairs will not achieve desired efficacy. Inform upfront.

Hair Anatomy



**Bulb / bulge are critical structures
responsible for hair re-growth**

Patient Consult

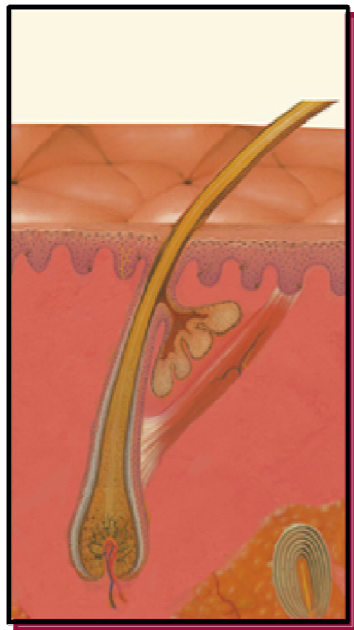
What are the 3 cycles of hair growth?

Anagen: Hair is actively growing

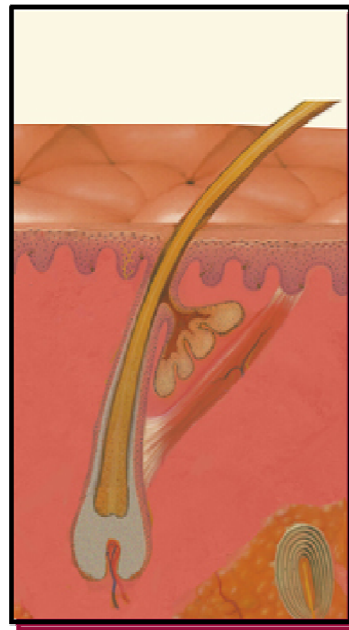
Catagen: Hair is dormant

Telagen: Hair is falling out

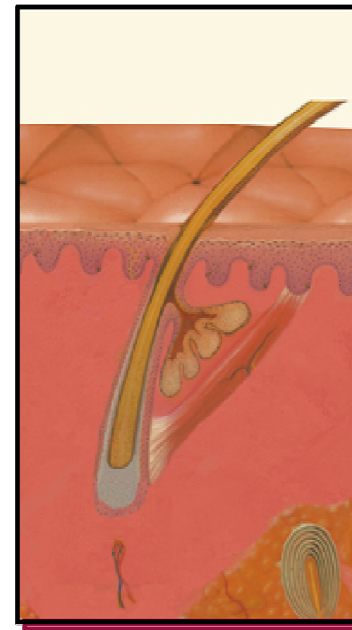
Hair Biology



Anagen



Catagen



Telogen

Patient Consult

When do you treat?

Different areas have different percentages of hair in the Anagen phase.

Face, Axilla, Bikini are approximately 20-35%

Treatments should occur every 4 weeks

Trunk and Extremities have approximately 10-20%

Treatments should occur every 6 to 8 weeks

Hair Growth Information

Body Area	% Anagen Hair	% Telogen Hair	Telogen Duration	Follicles density/cm2	Depth of follicle
Axillae	30%	70%	3 months	65	3.5-4.5 mm
Brow and Ears	10-15%	85-90%	3 months	50	2-2.5 mm
Beard	70%	30%	10 weeks	500	2-4 mm
Upper Lip	65%	35%	6 weeks	500	1-2.5 mm
Scalp	80-90%	13%	3-4 months	350	3-5 mm
Trunk	10-20%	80-90%	4 months	70	2-4.5 mm
Pubic Area	20-30%	70%	3 months	70	3.5-4.5 mm
Arms	20%	80%	18 weeks	80	2-4.5 mm
Legs & Thighs	20%	80%	6 months	60	2.5-4 mm
Breast	30%	70%	3 months	65	3-4.5 mm

Patient Consult

For best results, multiple treatments will be needed. For most areas 6-10 treatments are necessary to achieve desired hair clearance. One may need more or less than 6 treatments depending on hair type, previous methods of hair removal, and skin color. Results are not guaranteed.

Patient Consult

Can cancer survivors be treated?

What areas of the body can't be treated?

Can you treat a man's head?

Can you treat genitals?

Can children be treated?

Can I use sunless tanning products?

Patient Consult

More questions worth mentioning.

- Can treatment be done over implants?
- Can treatment be done over injectables?
- What about orthopedic hardware?
- Pacemakers?
- Braces or dental work?

Patient Consult

Contraindications

Accutane

Patients should cease usage for 6 months.

Sun exposure

Tanning is an absolute No No.

AVOID the Sun for at least 1 month prior to a treatment and 2 weeks after. The chances of blisters and pigment changes are high.

This included tanning sprays and lotions. “Pigment is pigment”

Tattoos

Avoid treating these areas. Areas may blister and certain colors will change (i.e., Red to Black)

This includes Permanent Makeup!!!

No plucking, bleaching, waxing or threading for at least 4 weeks before initial treatment and during treatments

Patient Consult

Contraindications (continued)

Pregnancy

No risk for pregnant clinician

DO NOT TREAT Expecting mothers

Liability reasons

Hormones are “out of whack”

Patient Consult

During consultation explain and obtain an
INFORMED CONSENT

Document, Document, Document. Remember to
chart the treatment procedure.

Invikta Treatment Protocol For Hair Removal

Pre-Treatment

- Shave hair 24 hours prior to treatment. A little stubble is OK.
- If history of cold sores, an antiviral must be prescribed.

Post Treatment

- Cool skin with cold gel pack or “ice water balloon”. Patient will discard when completely melted. This releases the left over heat on skin being held by hair.
- Apply chemical free sunblock if treated area is exposed to the sun.

Treatment Protocol

NO Plucking – 4 weeks prior or anytime during treatments

NO Waxing – 4 weeks prior or anytime during treatments

NO Tweezing – 4 weeks prior or anytime during treatments

NO Threading – 4 weeks prior or anytime during treatments

Treatment Protocol

3 Things to ALWAYS remember while treating
Use clear ultrasound gel

“FLUSH”

“PERPENDICULAR”

NO MORE THAN 20% OVERLAP

Say it with me.....”FLUSH, PERPENDICULAR, NO MORE THAN
20% OVERLAP”

Complications

There are risks and complications that can occur from laser treatment.

Blister
Heat rash
Bruising
Scarring
Infection
Hyper-pigmentation
Hypo-pigmentation
Swelling
Welting

Chill Tip



- Cool Before/After laser pulse
- Cools / protects epidermis from thermal damage
- Protects darker skin types
- Good visibility / does not slow treatment

Laser Hair Reduction

Operative Checklist:

Laser in “ready” mode and confirm correct energy with proper overlap/coverage

“Squeaky Clean” Skin

Safety goggles or glasses on clinician and patient

No flammable substances in operating area

- Written post-operative instructions given to the patient
- -Safety first! Follow lowest guidelines and titrate up to improve efficacy

Safety Procedure Checklist

Issue	Policy
Flammability	Fire Extinguisher Water and Wet Cloths Non-reflective Instruments No alcohol preparations Keep Laser in “standby” when not in use
Ocular Safety	Appropriate eyewear without reflective metal
Electrical Hazards	Dedicated outlets for laser use No extension cords No defects in laser cord No water or other solutions near laser
Controlled access to laser suite	Warning and Danger signs posted on doors Opaque material on windows Laser keys locked when not in use
Laser plume	Smoke evacuator with clean filter and tubing Laser masks

Questions?